

# 尺寸:237.5\*138mm

## AILE



Intelligent visual ear cleaner

① Search for the JesHome app in the Apple Store/Google Play/App Store, or scan the QR code to download and install it directly.

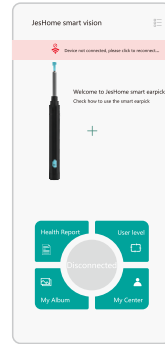


② Press 2 second to turn-on

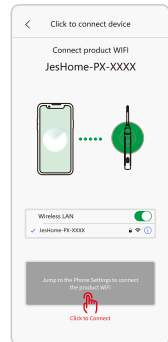


Blue indicator light  
app in turn-on

③ Open the APP and click "s"



④ Connect your phone to the ear cleaner's Wi-Fi, which name is "JesHome-PX-XXXX".



⑤ Return to JesHome APP and click "Start" to start using



### Product parameters

Product Name: Smart Visual Earpick	Network Standard: IEEE 802.11b/g
Product Model: P series	Operating Frequency: 2.4GHz
Ambient Temperature: -10°C--+50°C	Image Sensor: CMOS
Battery Capacity: 130mA	Lens Diameter: 3.5mm
Charging Time: 45 minutes	Image Transmission Pixel: 5MP
Service Time: 65 minutes	Image Transmission Rate: 20FPS
Working Voltage: 3.7V~4.2V	Gravity Sensor: 3-axis G-Sensor
Input Voltage: 5V-1A	Product Size: φ14mm * H145mm
Output Power: 0.5W	Product Weight: 14.2g
Charging interface: Type-C	

### Mobilephone system support instructions

- 1.For Android phones :support 5.0 and above
- 2.For iPhone :supports 10.0 and above.

### Cautions

- 1.It is recommended to carefully clean the lens with cotton swab.
- 2.Please observe the surroundings before use, do not use it in an environment where it may come into contact with moving people or animals, do not use it in a moving vehicle, or in other unstable environments. Please keep your body stable when using it.
- 3.This product is not suitable for children under 3.
- 4.To avoid accidental injury, children are prohibited from using this product alone.
- 5.Do not place the machine in a humid environment for a long time, or immerse the whole machine in liquid.
- 6.The product has built-in polymer battery, which must be charged once a month if not used frequently.
- 7.Please charge the device with 5V charger. It is forbidden to use this device when it is under charging state.
- 8.Avoid exposing the product to direct sunlight.
- 9.Do not place heavy objects on top of the machine.
- 10.During use, the temperature of the product will rise slightly (up to about 35°), which is normal
- 11.Do not put the product in water for cleaning to avoid damage.

**AILE Medical LLC**  
2310 Parklake Dr NE Ste 477 Unit J24  
Atlanta, GA 30345  
United States

**3-Years Warranty**  
Phone: +1 888-875-0846  
Email: help@4aile.com  
Time: 9:00 am - 5:00 pm

### Troubleshooting

S/N	Fault	Solution
1	No response after startup	Please charge with the provided charging cable. The charging duration is 40 minutes
2	Camera indicator does not light up	Shut down and restart or reconnect to WIFI
3	APP crashes	Uninstall the existing APP and rescan the QR code to install the latest version of APP
4	Silicone sleeve is loose	Remove the silicone sleeve and slowly re-insert the earpick, or replace the silicone sleeve
5	Blue indicator flashes quickly	Low battery, please charge the product with the provided charging cable
6	Unstable connection, it is easy to disconnect or freeze when using	Restart the earpick and reconnect to the APP
7	After the product is connected to APP, image cannot be displayed normally	Disconnect the phone from the WIFI of the earpick, restart the earpick, and reconnect to WIFI

If the above operation still fails to solve the problem, please contact our customer service staff, we will further provide you with practical solutions on APP- Personal Center-FAQ

Component Name	Restricted substances and its chemical symbols					
	(Pb)	(Hg)	(Cb)	(Cr(VI))	(PBB)	(PBDE)
Circuit board	○	○	○	○	○	○
casing	○	○	○	○	○	○
wires	○	○	○	○	○	○
plastic silicone accessories	○	○	○	○	○	○

Note: "○" means that the percentage content of this hazardous substance does not exceed the standard